

THE PRESENT AND FUTURE OF THE CODAN MT-4E

Where we are and where we're going

Codan Radio Communications will be launching the Cascade infrastructure platform in 2018. This new product line has been designed completely from the ground-up, and will provide next-generation infrastructure solutions for fixed, commercially powered Public Safety applications with a focus on IP networking and software-based operation.

What does this mean for the Codan MT-4E Series?

Today and for the foreseeable future, the Codan MT-4E Series will continue to be the same actively developed and fully-supported cornerstone infrastructure platform it currently is. The focus of the MT-4E Series will always remain on creative communications solutions under limiting conditions, however greater emphasis will be made on how the MT-4E product fits in an increasingly IP-centric industry.

In the context of a complete network solution that utilizes both the MT-4E and the new Cascade platform, the strength of the MT-4E lies in the ability to provide IP-capable communications at locations with greater constraints on power and space, or that are susceptible to harsher environmental conditions. The two product lines will compliment and supplement each other, providing an ever-growing portfolio of solutions as Codan continues to shift its focus to being a provider of complete radio communications solutions.

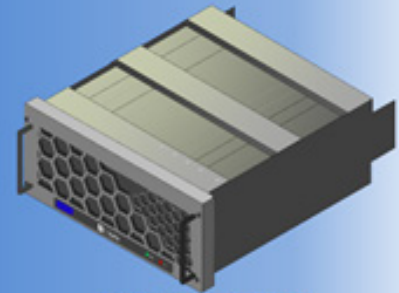
Remote, Low-Power Installations

Centralized, Commercially-Powered Installations



MT-4E

Repeaters
Base Stations
Conventional Voting and Simulcast
Trunking
and more...



CASCADE

What's new with the Codan MT-4E Series?

As the MT-4E is a proven product with a history of reliability in the field, development efforts are focused on adding further functionality to this already capable product. Recent additions to the MT-4E firmware and RSS programming software include a customizable courtesy tone as well as battery-level indication and P25 Test Tone; as always, the software update to achieve this enhanced functionality is available on our website, free of charge.

Another area of continued development is integration with external devices providing enhanced capability. The recent addition of both IP-based and RF-based remote site monitoring equipment to the MT-4E product line up is an example of Codan's commitment to finding product integrations to address the needs of existing and future customers.